

Emotional Heaviness and Amplifying Joy in Community

This resource is designed to help you explore emotional heaviness, understand its effects, and discover ways to amplify joy in your community.

	<p>Recognizing Emotional Heaviness (Weltschmerz)</p> <ul style="list-style-type: none"> - Many people are feeling heavy, tired, foggy, and overwhelmed - Helpers often continue giving while their own “buckets” are low <p>Key insight: <i>Honest sharing helps reduce isolation → “I’m not alone”</i></p>
	<p>The Power of Honest Connection</p> <ul style="list-style-type: none"> - We often ask ‘How are you?’ but don’t answer or listen honestly - Honest sharing creates connection and validation - Recognizing shared feelings reduces isolation <p>Key insight: <i>- Create space for real check-ins</i> <i>- Normalize multiple or evolving answers to ‘How are you?’</i></p>
	<p>Amplifying Joy (‘Filling Your Bucket’)</p> <ul style="list-style-type: none"> - Joy is not a luxury—it’s essential for resilience - “Bucket filling” looks different for everyone. <p>Key insight: <i>There is no ‘right way’ to fill your bucket – variety matters. Examples: Gratitude and small wins, hobbies, books, music, shows, food, creativity, nature - Anything that restores energy or brings comfort</i></p>
	<p>Supporting Emotional Wellbeing</p> <ul style="list-style-type: none"> - Set boundaries: limit news/information intake, create clear end-of-work routines - Prioritize: focus on high-impact tasks, lower/adjust standards when needed - Focus on what’s within reach: small, tangible actions and local engagement can help reduce feelings of overwhelm

Venting VS trauma Dumping

Healthy venting:	Trauma dumping:
<ul style="list-style-type: none"> - Sharing frustrations appropriately with someone - Mutual exchange (both people can share) - Taking accountability - Being open to solutions - Sticking to one topic at a time - Keeping the conversation time-limited 	<ul style="list-style-type: none"> - Oversharing at inappropriate times - Not allowing space for the other person to share - Avoiding accountability - Not looking for solutions - Rapidly switching between topics - Bringing up too many issues for too long



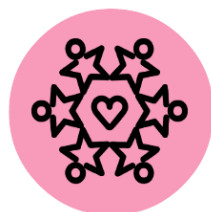
Reflection questions:

- Is the other person able to participate in the conversation?
- Is this the right time and context?
- Am I respecting emotional boundaries?

For those receiving heavy emotional sharing:

- Recognize your own emotional limits
- Boundaries should be clear and compassionate
- Practice self-care afterward

Practical tools



Community as Medicine

Healing happens together, not alone.

Engage in group-based activities to support well-being through four pillars:

- **Move:** Accessible physical activity for all levels
- **Nourish:** Practical, culturally aware healthy eating
- **Connect:** Peer support and guided conversation
- **Be:** Mindfulness, rest, and stress reduction practices

→ [Learn more](#)

'Action is the antidote to despair' - Joan Baez